

# Alien Series 24/48V WISP PoE Switch

WI-PS310GF-Alien | WI-PMS310GF-Alien | WI-PMS310GF-Alien-I | WI-PMS328GF-Alien  
WI-PoE90X | WI-PoE61-24V

## Overview

The Alien PoE Switch Series was designed specifically for the WISP with a rugged chassis and extended operating temperature range. It features a simple yet powerful user interface providing the software features WISPs need in a switch.

## Features

### 24V/48V Auto-detect

PoE Switch is suitable for 48V 802.3af/at and 24V PoE powered devices like many wireless AP, CPE, IP-cameras, VOIP phones, etc.

### Full Gigabit

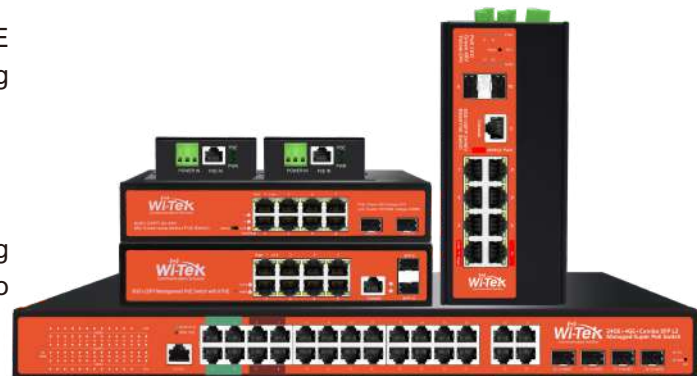
Build and expand your network with Wi-Tek full gigabit PoE switch, delivering robust performance switching for growing networks.

### Fiber Connectivity

The switch provides fiber connectivity options for your growing networks. All switches include two SFP ports, providing up to 1000Mbps uplink ports.

### Powerful Functionality

The L2 Managed PoE Switch uses a intelligent web page that provides basic switching features, PoE configuration per port, and a variety of advanced features.



# Specifications



HARDWARE FEATURES	WI-PMS310GF-Alien	WI-PMS310GF-Alien-I	WI-PMS328GF-Alien	WI-PS310GF-Alien	WI-POE90X	WI-POE61-24V
L2 Managed	Yes	Yes	Yes	No	No	No
Interface	8 10/100/1000Mbps RJ45 Ports 2 1000Mbps SFP Slots 1 Console Port	8 10/100/1000Mbps RJ45 Ports 2 1000Mbps SFP Slots	24 10/100/1000Mbps RJ45 Ports 4 1000Mbps Combo SFP Slots 1 Console Port	8 10/100/1000Mbps RJ45 Ports 2 1000Mbps SFP Slots	2 100/1000Mbps RJ45 Ports	2 100/1000Mbps RJ45 Ports
PoE Port	Port 1- 8: 802.3 af/at and 24V Passive	Port 1-2: 48V 802.3bt 60W Port 3-8: 24V Passive or 48V 802.3af/at	Port 1-4: 24V Passive or 802.3 af/at Port 5-8: 802.3bt 90W Port 9-24: 802.3af/at	Port 1- 8: 802.3 af/at and 24V Passive	PoE IN: Passive 24V PoE OUT: 802.3af/at 48V	PoE IN: 802.3af/at 48-52V PoE OUT: Passive 24V
Network Media	10BASE-T: UTP category 3, 4, 5 cable (maximum 100m) 100BASE-TX/1000Base-T: UTP category 5, 5e, 6 or above cable (maximum 100m) 1000BASE-X: MMF, SMF 1000Base-L X:62.5µm/50µm MM(2m~550m) or 10µm SMF(2m~5000m)				10BASE-T: UTP category 3, 4, 5 cable (Max 100m) EIA/TIA-568 100Ω STP (Max 100m) 100BASE-TX: UTP category 5, 5e cable (Max 100m) EIA/TIA-568 100Ω STP (Max 100m) 1000BASE-T: UTP category 5, 5e, 6 cable (Max 100m)	
Fan Quantity	Fanless	Fanless	2 Fans	Fanless	Fanless	Fanless
Power Consumption	150W (max. with PoE device connected)	300W (max. with PoE device connected)	400W	150W (max. with PoE device connected)	30W	24W
External Power Supply	DC 48-55V 5A Max AC 110~240V 50/60HZ	Dc1: 9-52V 10A Max DC2: 37-57V 8A Max DC3: 37-57V 8A Max	AC 110~240V 50/60HZ	AC 110~240V 50/60HZ DC 48-55V 5A Max	DC IN 12-57V PoE IN 24V	DC IN 36-60V PoE IN 48V
Exchange Capacity	20Gbps	20Gbps	56Gbps	20Gbps	2Gbps	2Gbps
Packet Forwarding Rate	14.9Mpps	18Mpps	41.7Mpps	14.9Mpps	14.9Mpps	14.9Mpps
Mac Address Table	8K	8K	16K	4K	2K	2K
Packet Buffer Memory	1.5Mb	4Mb	12Mb	1.5Mb	1Mb	1Mb
Jumbo Frame	10240 Bytes	10240 Bytes	10240 Bytes	10240 Bytes	10240 Bytes	10240 Bytes
Protection Level	6KV Lightning protection 6KV ESD Contact discharge	6KV Lightning protection 8KV ESD Contact discharge	6KV Lightning protection 6KV ESD Contact discharge		4KV Lightning protection 4KV ESD Contact discharge	
Transmission Method	Store-And-Forward					
Advanced Functions	Priority Function Mac Address Auto-Learning And Auto-Aging Store and forward IEEE 802.3x flow control for Full-duplex Mode Backpressure for Half-duplex Mode			Mac Address Auto-Learning And Auto-Aging Store and forward IEEE 802.3x flow control for Full-duplex Mode Backpressure for Half-duplex Mode	Mac Address Auto-Learning And Auto-Aging Store and forward IEEE 802.3x flow control for Full-duplex Mode Backpressure for Half-duplex Mode	
OTHERS						
Certification	CE, FCC, RoHS					
Package Dimension	270×256×65 mm	270×220×67 mm	510×375×90 mm	270×256×65 mm	125×97×40 mm	125×97×40 mm
Switch Dimension	210×140×45 mm	163×133×75 mm	440×29×45 mm	205×140×45 mm	85×87×30 mm	85×87×30 mm
Gross Weight	1.37kg	1.92kg	4.11kg	1.64kg	0.19kg	0.19kg
Net Weight	0.91kg	1.52kg	3.36kg	1.05kg	0.15kg	0.15kg
Package Contents	1 × PoE Switch 1 × Power Cord 1 × User Guide	1 × PoE Switch 1 × Temperature Sensor 1 × Screw Driver 1 × User Guide	1 × PoE Switch 1 × Power Cord 1 × Rack-Mount Kit 1 × Robber Feet 1 × User Guide	1 × PoE Switch 1 × Power Cord 1 × User Guide	1 × PoE Converter 1 × User Guide	1 × PoE Converter 1 × User Guide
Working Environment	Working Temperature: -10°C~55°C Storage temperature: -40°C~70°C Working Humidity: 10%~90% RH non-condensing Storage Humidity: 5%~90% RH non-condensing	Working Temperature: -40°C~80°C Storage temperature: -40°C~90°C Working Humidity: 10%~90% RH non-condensing Storage Humidity: 5%~95% RH non-condensing	Working Temperature: -10°C~55°C Storage temperature: -40°C~70°C Working Humidity: 10%~90% RH non-condensing Storage Humidity: 5%~90% RH non-condensing	Working Temperature: -10°C~55°C Storage temperature: -40°C~70°C Working Humidity: 10%~90% RH non-condensing Storage Humidity: 5%~90% RH non-condensing	Operating Temperature: -10°C~70°C	Operating Temperature: -10°C~70°C

SOFTWARE FEATURES	WI-PMS310GF-Alien	WI-PMS310GF-Alien-I	WI-PMS328GF-Alien
Advanced Functions	Support 802.1p CoS/DSCP priority		
	Support 4 priority queues		
	Queue scheduling: SP, WRR, SP+WRR		
	Port/Flow- based Rate Limiting		
L2 Features	IGMP Snooping V1/V2/V3		
	802.3ad LACP (Up to 8 aggregation groups, containing 8 ports per group)		
	Spanning Tree STP/RSTP/MSTP		
	Port isolation		
	BPDU filtering/guard		
	TC/Root protect		
	Loop back detection		
	802.3x Flow Control		
VLAN	Supports up to 4K VLANs simultaneously (out of 4K VLAN IDs)		
	Port/ MAC/Protocol-based VLAN		
	Management VLAN configuration		
Access Control List	L2 - L4 package filtering based on source and destination MAC address, IP address, TCP/UDP ports, 802.1p, DSCP, protocol and VLAN ID		
	Time Range Based		
Security	IP-MAC-Port-VID Binding		
	IEEE 802.1X Port/MAC Based authentication, Radius, Guest VLAN		
	DoS Defence		
	Dynamic ARP inspection (DAI)		
	SSH v1/v2		
	SSL v2/v3/TLSv1		
	Port Security		
	Broadcast/Multicast/Unknown-unicast Storm Control		
Management	Web-based GUI and CLI management		
	SNMP v1/v2c/v3, compatible with public MIBs DHCP/BOOTP Client, DHCP Snooping, DHCP Option82		
	CPU Monitoring		
	Port Mirroring		
	Time Setting: SNTP		
	Integrated NDP/NTDP feature		
	Firmware Upgrade: TFTP & Web		
	System Diagnose: VCT		
	SYSLOG & Public MIBS		



### Wireless-Tek Technology Limited

Address: Room 402 4F, BiaoFan Technology Building, Bao'An Avenue, FuYong Town, Bao'An district, ShenZhen

Website: [www.wireless-tek.com](http://www.wireless-tek.com)

Tel: 86-0755-32811290

Email: [sales@wireless-tek.com](mailto:sales@wireless-tek.com)

Technical Support: [tech@wireless-tek.com](mailto:tech@wireless-tek.com)



Technical Support



Cloud Management



Company Website